

MATCHING PHOTONS TO YOUR NEEDS

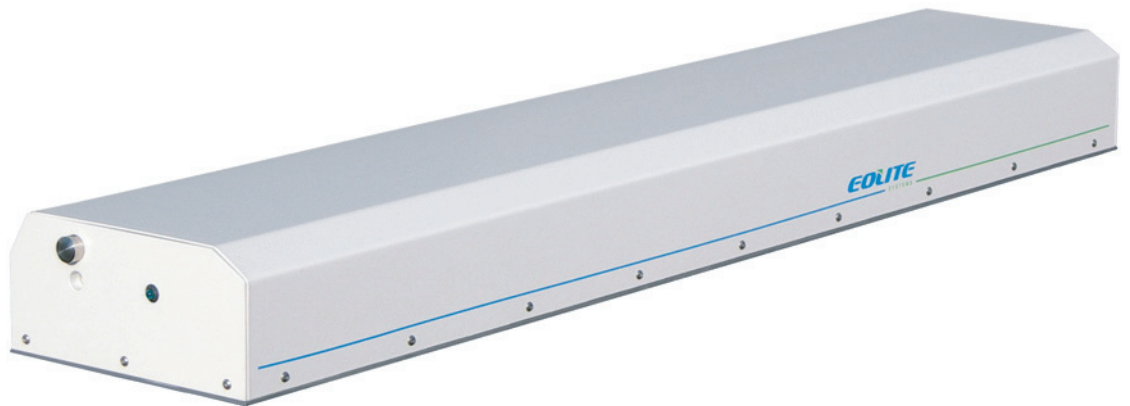
Boreas

ROD-TYPE FIBER LASER

- ▶ 1 mJ energy
- ▶ 30 W average power
- ▶ 10 ns pulse duration
- ▶ Diffraction limited beam
- ▶ Polarized laser emission
- ▶ 10-100 kHz tunable repetition rate

HIGH POWER NANOSECOND FIBER LASER

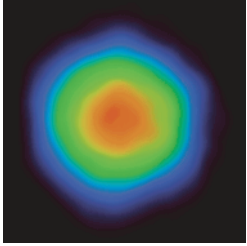
- ▶ MICRO-MACHINING
- ▶ FLAT PANEL & SOLAR CELL PATTERNING
- ▶ DEEP ENGRAVING
- ▶ HIGH SPEED MARKING
- ▶ PRECISION DRILLING
- ▶ NON LINEAR OPTICS



EOLITE
SYSTEMS

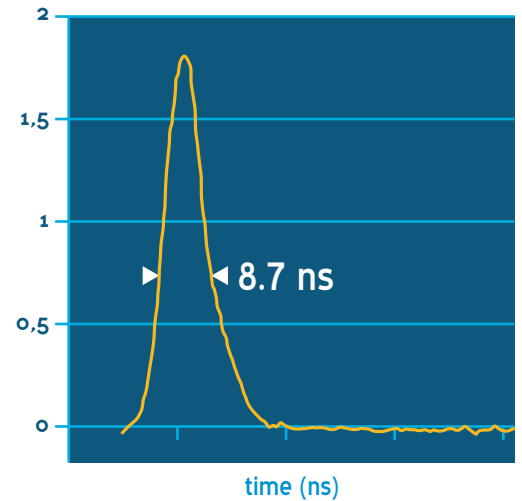
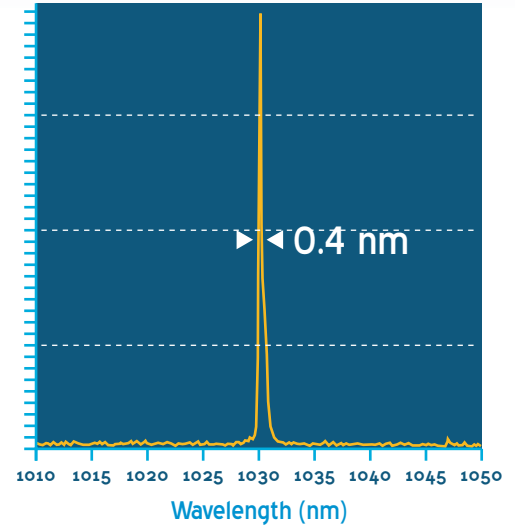
PARC UNITEC I
6 ALLÉE DU DOYEN BRUS
33600 PESSAC - FRANCE

contact@eolite.com
PHONE : +33 (0)5 56 46 45 50
FAX : +33 (0)5 56 46 24 35



Boreas lasers are based on a new generation of "Rod-Type Fibers", designed to provide high energy pulses together with a very good beam quality. The single mode propagation in the fiber insures a polarized diffraction limited beam. A patented resonator design produces sub-10 ns pulses at repetition rates up to 200 kHz.

Fiber technology makes thermal management much easier and leads to constant high beam quality regardless of the output power or repetition rate. Boreas offers high average power and high peak power pulses with very easy tuning of repetition rates. Boreas patented and ruggedize design provides the stability needed for the most demanding industrial applications.



System specifications	Boreas 30	Boreas 60
Average power	30 W	60 W
Wavelength	1030 nm	1030 nm
Pulse energy	1 mJ	1 mJ
Pulse duration	10 ns @ 30 kHz < 25 ns @ 100 kHz	10 ns @ 60 kHz < 25 ns @ 200 kHz
Pulse repetition rate	10-200 kHz	10-200 kHz
Beam parameter (M ²)	< 1.5	< 1.5
Polarization	Linear	Linear
Pulse to pulse stability	± 1.5%	± 1.5%
Long term stability (8h)	± 2%	± 2%
Temperature range	15-40°C	15-40°C
Warm up time	< 15 mn from cold start < 5 mn from warm start	< 15 mn from cold start < 5 mn from warm start
Dimensions	850x165x80 mm	850x165x80 mm
Power supply		
Pulse train modulation	0-100%	0-100%
External control	RS-232, TTL 5V	RS-232, TTL 5V
Cooling	Air or water	Water
Power consumption	300 W	500 W
Input voltage	90-240 V AC, 50-63 Hz	90-240 V AC, 50-63 Hz
Dimensions	19" rack or tower	19" rack or tower



LEGAL NOTICE :

Our policy is to constantly improve design and specifications. Specifications are subject to change without notice. Boreas is a Class IV Laser Product.